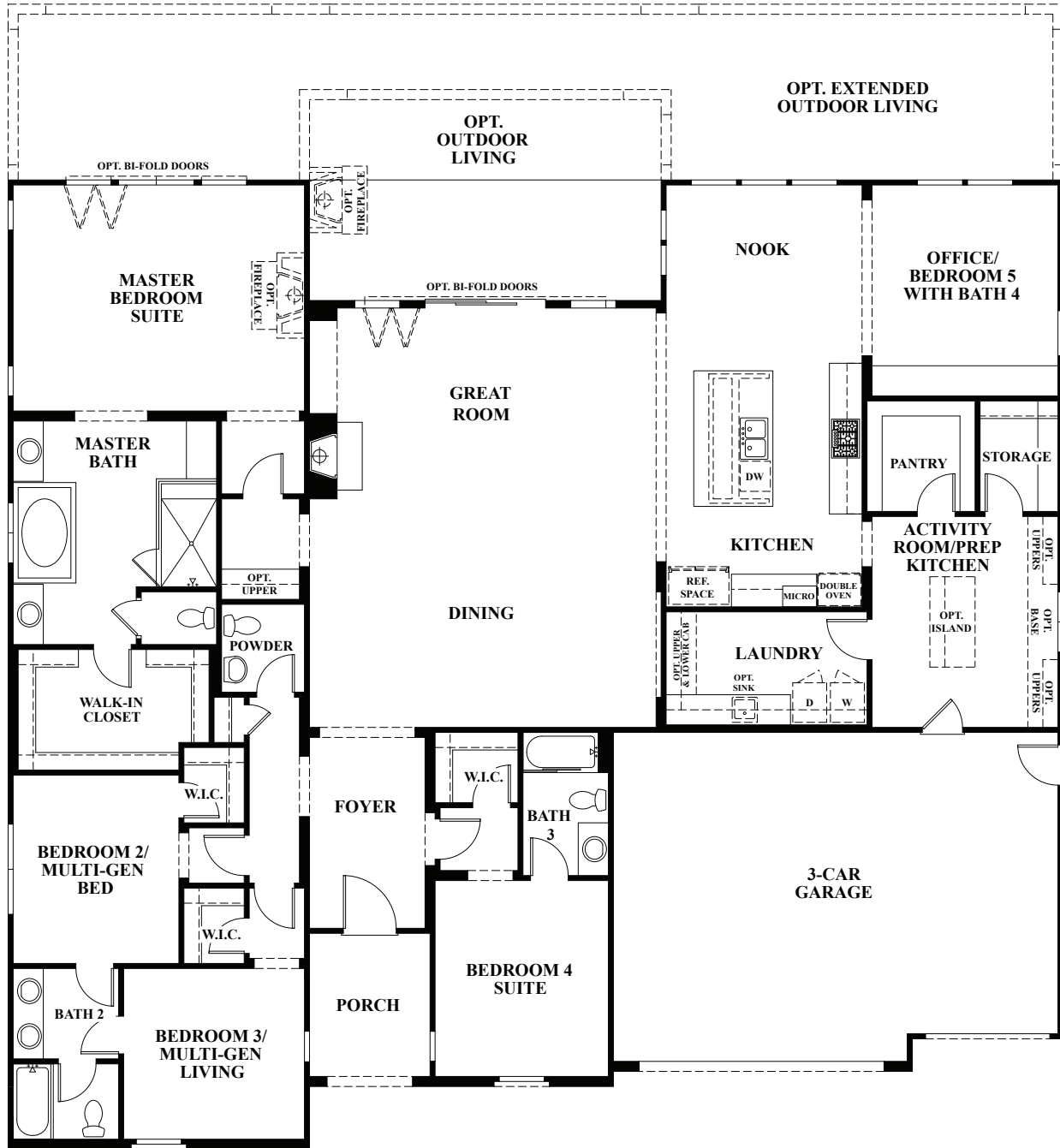


# Bella Vista

ESTATES

## Residence ONE



FIRST FLOOR

Floor Plan



Griffin Residential reserves the right to change floor plan specifications, exterior elevations and materials without prior notice. Window locations, styles, ceiling heights, entry, room dimensions and courtyards vary per plan and elevation. Square footages are approximate. All options/upgrades require additional charges, may require ordering at predetermined stages of construction and are subject to change/discontinuation anytime. Artist's renderings based on proposed development plans, which are subject to change without notice. Models are not an indication of preference. 7/16

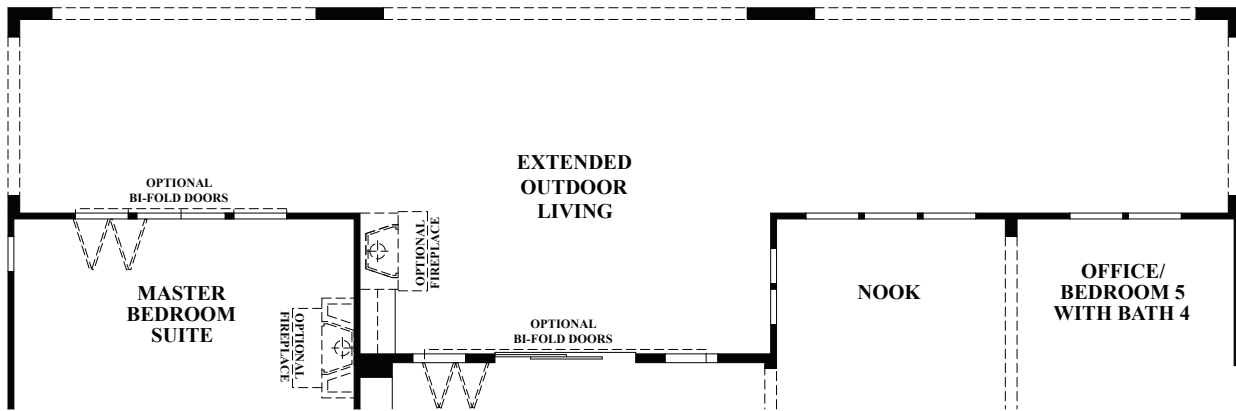
**GRIFFIN**  
RESIDENTIAL

# Bella Vista

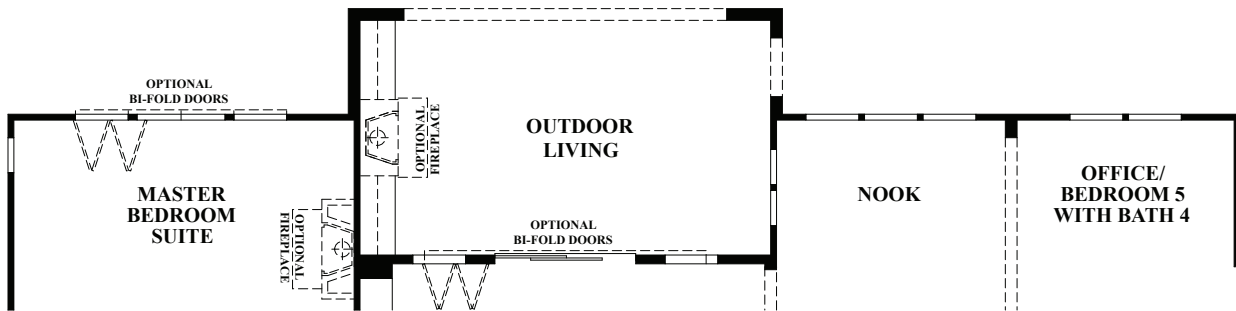
ESTATES

## Residence

### ONE - OPTIONS



**OPTIONAL EXTENDED  
OUTDOOR LIVING**



**OPTIONAL  
OUTDOOR LIVING**

Floor Plan



Griffin Residential reserves the right to change floor plan specifications, exterior elevations and materials without prior notice. Window locations, styles, ceiling heights, entry, room dimensions and courtyards vary per plan and elevation. Square footages are approximate. All options/upgrades require additional charges, may require ordering at predetermined stages of construction and are subject to change/discontinuation anytime. Artist's renderings based on proposed development plans, which are subject to change without notice. Models are not an indication of preference. 7/16

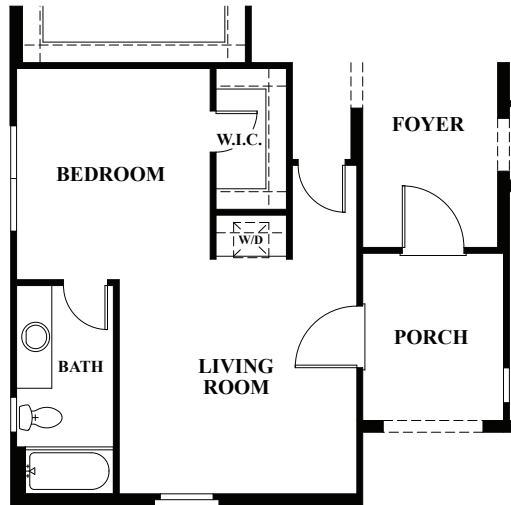
**GRIFFIN**  
RESIDENTIAL

# Bella Vista

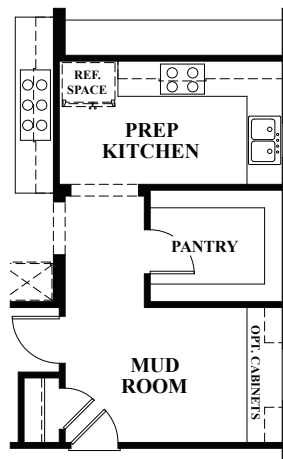
ESTATES

## Residence

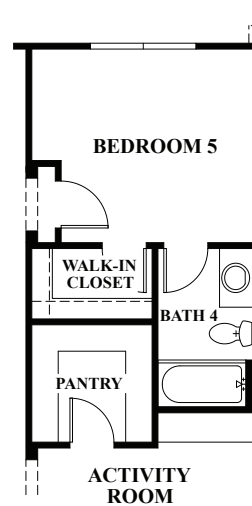
### ONE - OPTIONS



**OPTIONAL  
MULTI-GENERATIONAL  
SUITE**



**OPTIONAL  
PREP KITCHEN**



**OPTIONAL  
BEDROOM 5 WITH  
BATH 4 SUITE**



Griffin Residential reserves the right to change floor plan specifications, exterior elevations and materials without prior notice. Window locations, styles, ceiling heights, entry, room dimensions and courtyards vary per plan and elevation. Square footages are approximate. All options/upgrades require additional charges, may require ordering at predetermined stages of construction and are subject to change/discontinuation anytime. Artist's renderings based on proposed development plans, which are subject to change without notice. Models are not an indication of preference. 7/16

Floor Plan

**GRIFFIN**  
RESIDENTIAL